

Bob's Quick guide to configuring IP addresses on Windows 2000

Windows 2000

1. Double click on **My Computer**.
2. Double click on **Control Panel**.
3. Double click on **Network and Dial-up Connections**.
4. Double click on desired **Local Area Connection**.
5. Click on **Properties**.
6. Enter **IP Address**, **Subnet mask** and **Default gateway**.



My Documents



My Computer



My Network Places



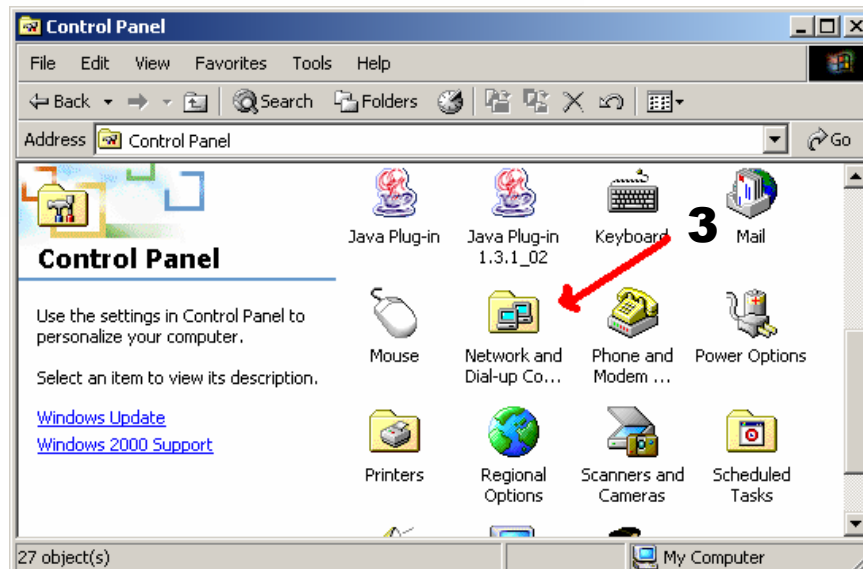
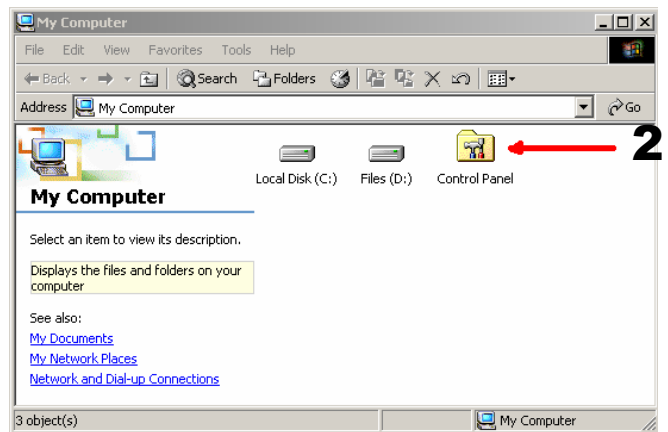
Recycle Bin



Internet Explorer

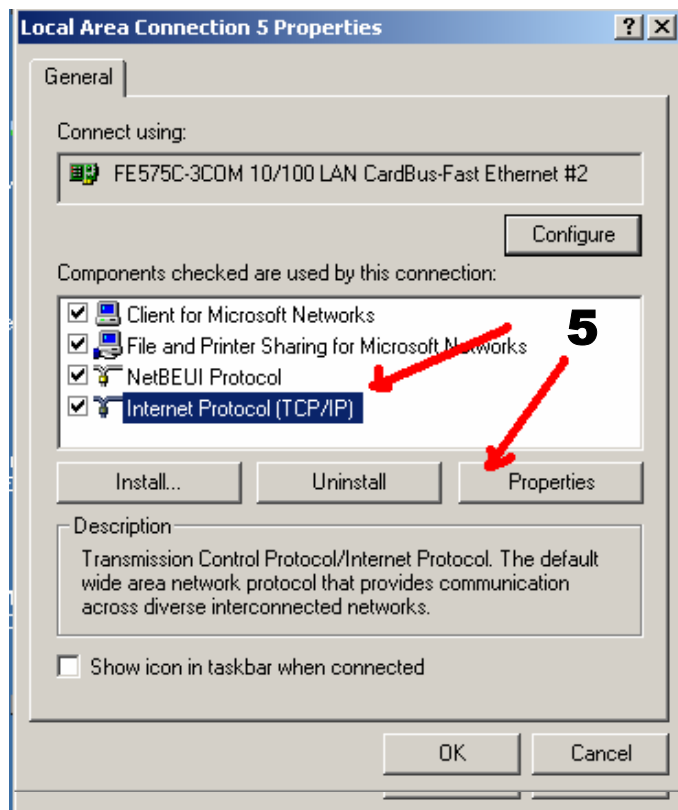
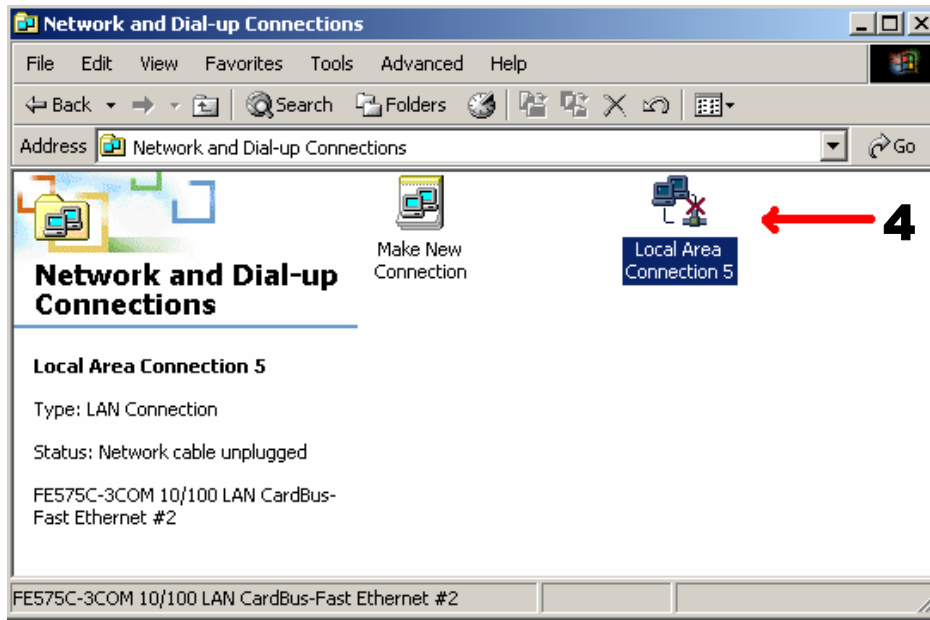


1



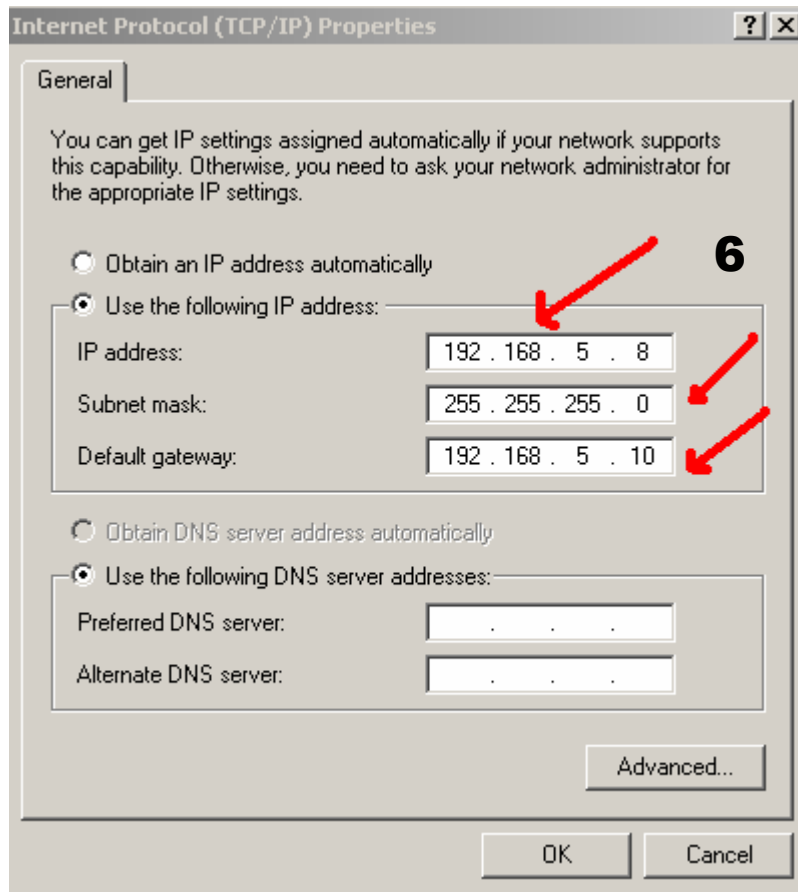
More resources can be found at - www.trainingmagic.com/cisco.htm

Bob's Quick guide to configuring IP addresses on Windows 2000



More resources can be found at - www.trainingmagic.com/cisco.htm

Bob's Quick guide to configuring IP addresses on Windows 2000

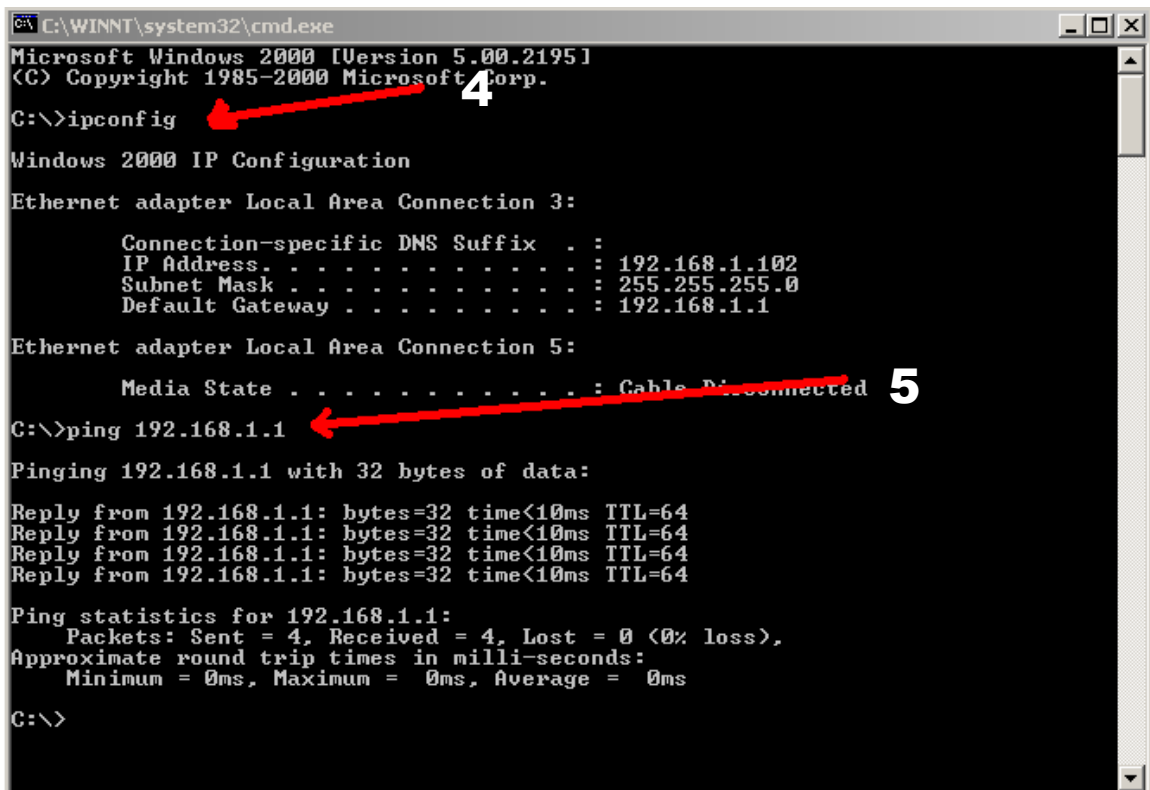
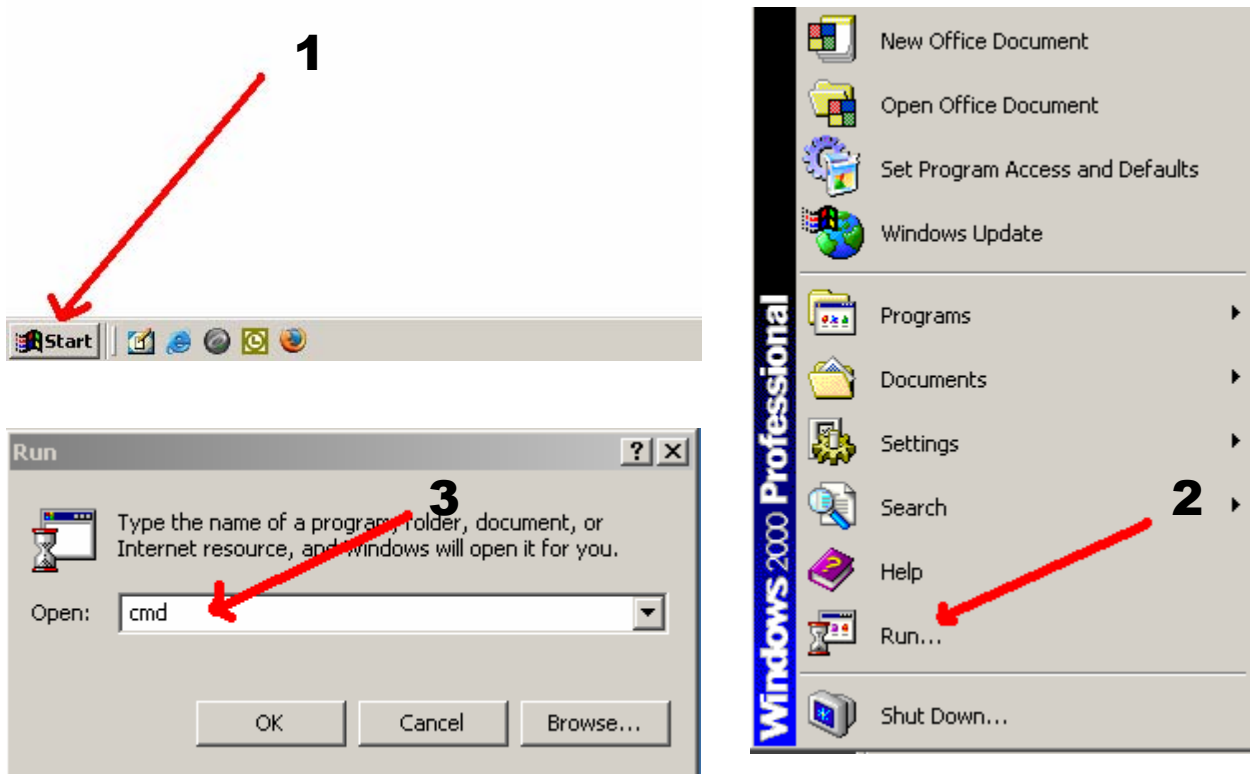


Confirming configuration & connectivity

1. Click on **Start** button.
2. Click on **Run**.
3. Enter **cmd** and click **OK**.
4. Type **ipconfig** and press enter.
5. Type **ping** (IP address of the default gateway) and press enter.

More resources can be found at - www.trainingmagic.com/cisco.htm

Bob's Quick guide to configuring IP addresses on Windows 2000



More resources can be found at - www.trainingmagic.com/cisco.htm